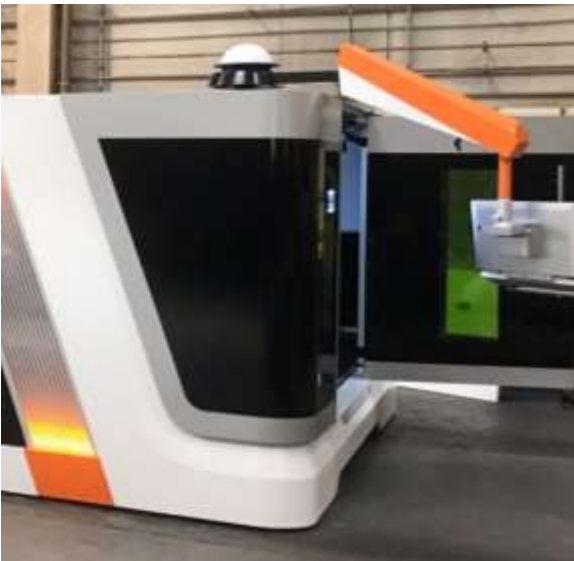


Why we should remove internal refuse systems from high-risk residential buildings

metro**STOR**[®]

Safer homes, better neighbourhoods, cleaner world



Waste Materials

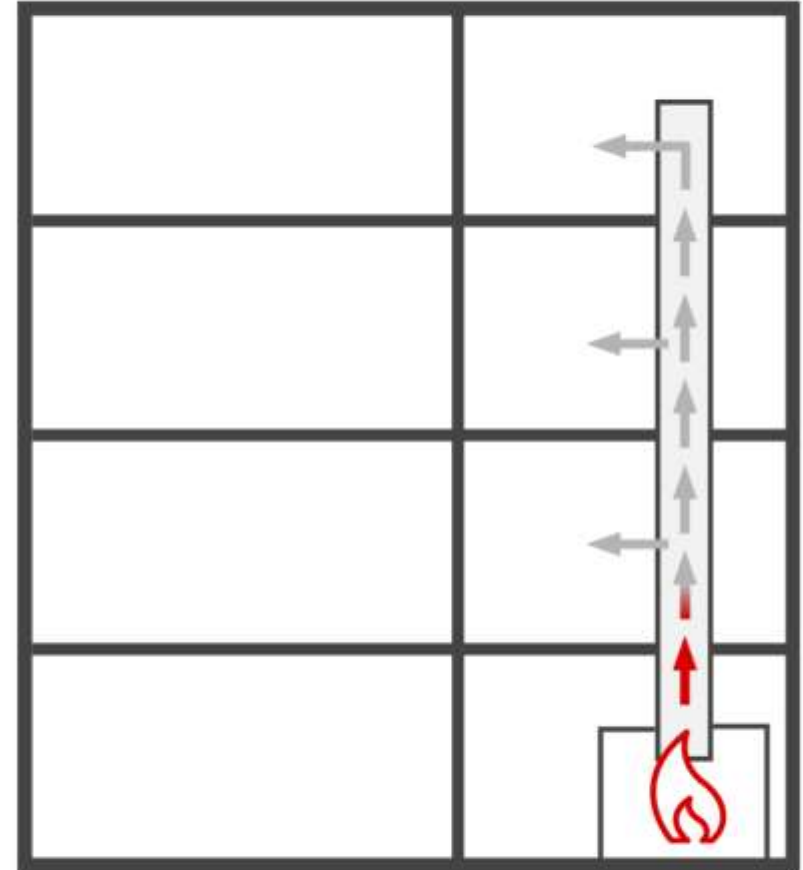
- 30,000 incidents/yr
- Mobile fuel source
- Fire spread
- Toxic smoke



Why are we still storing combustible waste materials inside HRRBs?

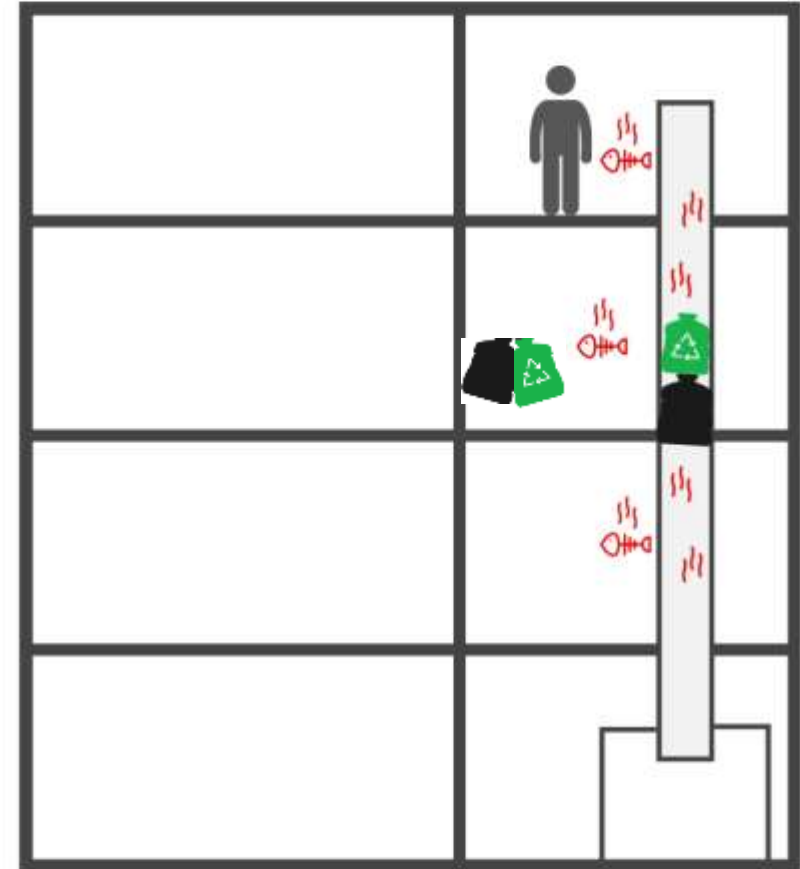
What is the Risk?

- Internal refuse chutes and bin rooms
- Increased volume
- Increased combustibility
- Vulnerability to ignition



Can we remove it?

- Manage risk
- Mitigate consequences
- Why not remove the risk altogether?
- Odour
- Blockages
- Maintenance
- No recycling



That Won't Work!



Yes it will!

LB Hounslow Fire Safety Strategy

- Exceed Minimum Standards
- Decommissioning Refuse Chutes
- External Waste & Recycling Hubs



Listening to Residents

- Fire Safety
- Antisocial Behaviour
- Service Charges
- Ability to Recycle
- Litter & Fly-tipping



Effective Communication

- Resident Benefits
- Safer, Cleaner Environment
- Easier to Recycle
- Assisted Collections
- Involving Local Schoolchildren



Progress so far

- Lower fire risk
- No ASB
- No odour
- Less litter
- Huge increase in recycling



So should we continue to store combustible waste materials inside HRRBs?

10 golden rules for bin storage

- Capacity
- Accessibility
- Safety
- Visibility
- Ease of use
- Communicate
- Segregate
- Secure
- Beautify
- Enforce

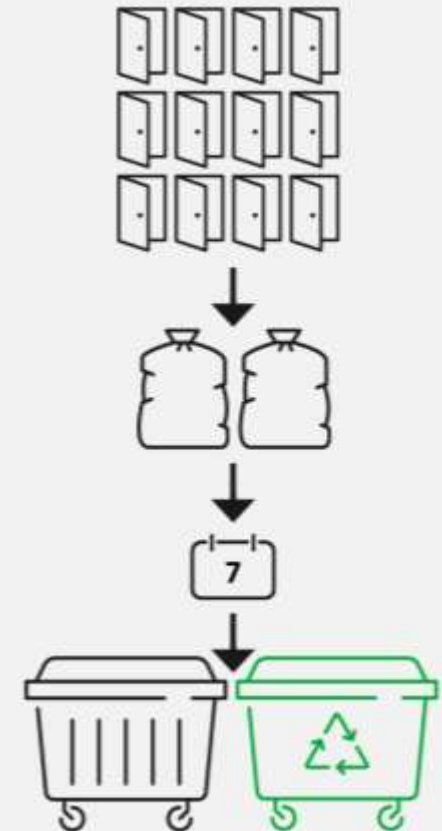
Capacity

Provide the right number of waste and recycling bins



BS5906 Storage of Waste

- Dwellings x (bedrooms x 70L + 30L)
- Split between refuse/recycling
- Segregated/co-mixed
- Collection frequency



Accessibility

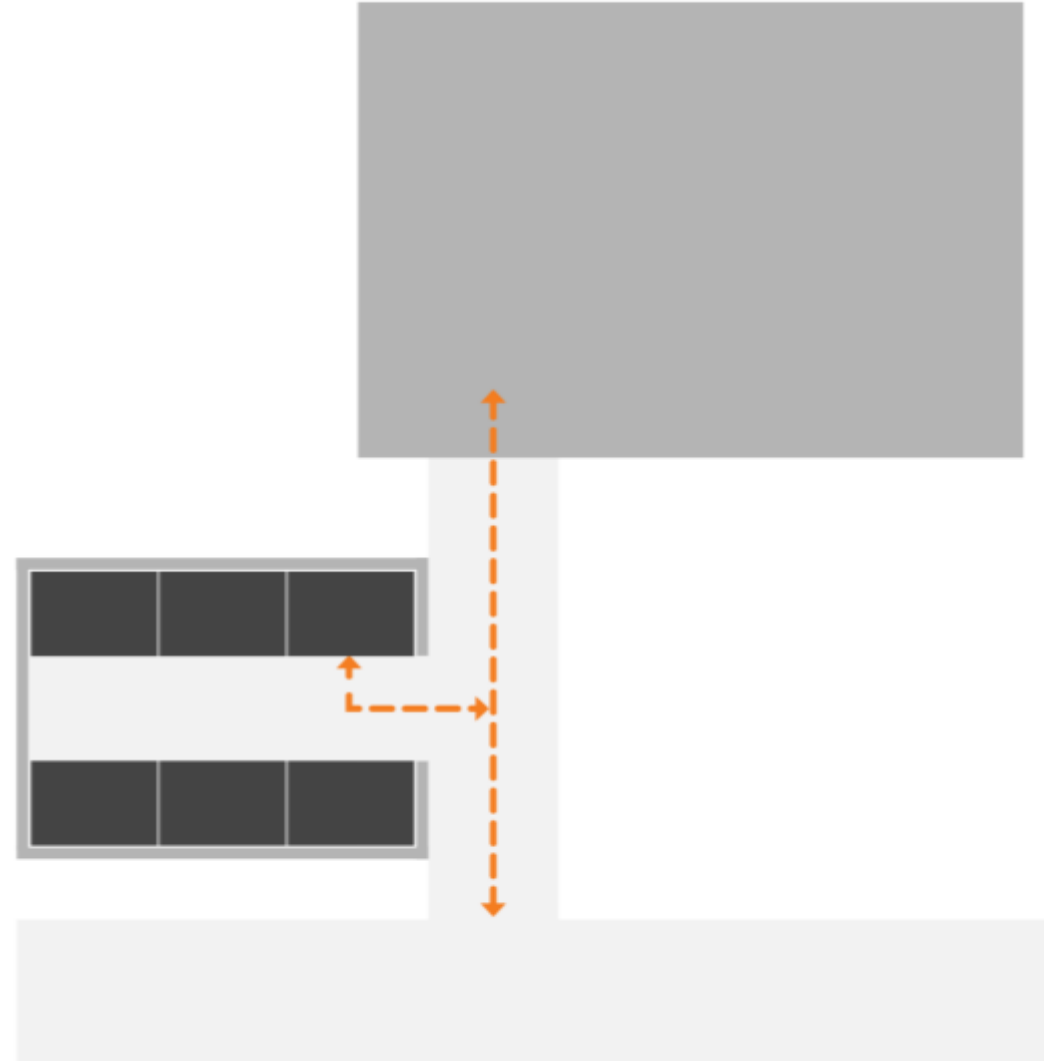
Site the bins in an accessible location for residents and collectors

Residents

- 30m max travel distance
- Main walking route

Collectors

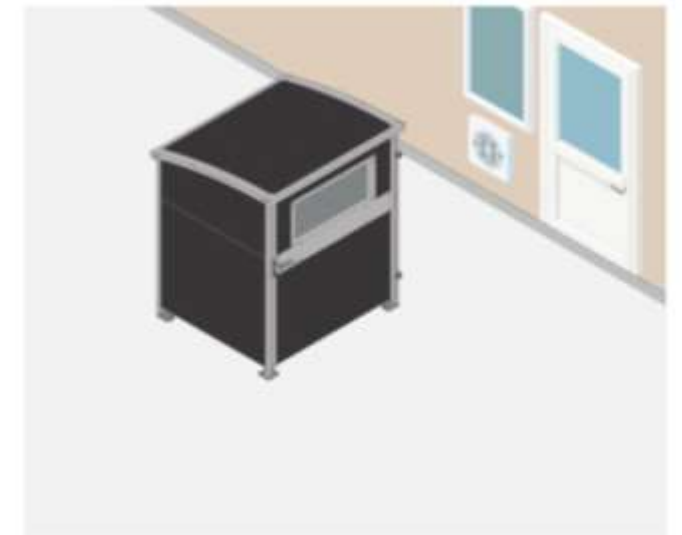
- Max pull distance 10m/25m



Safety

Secure bins at a safe distance from dwellings

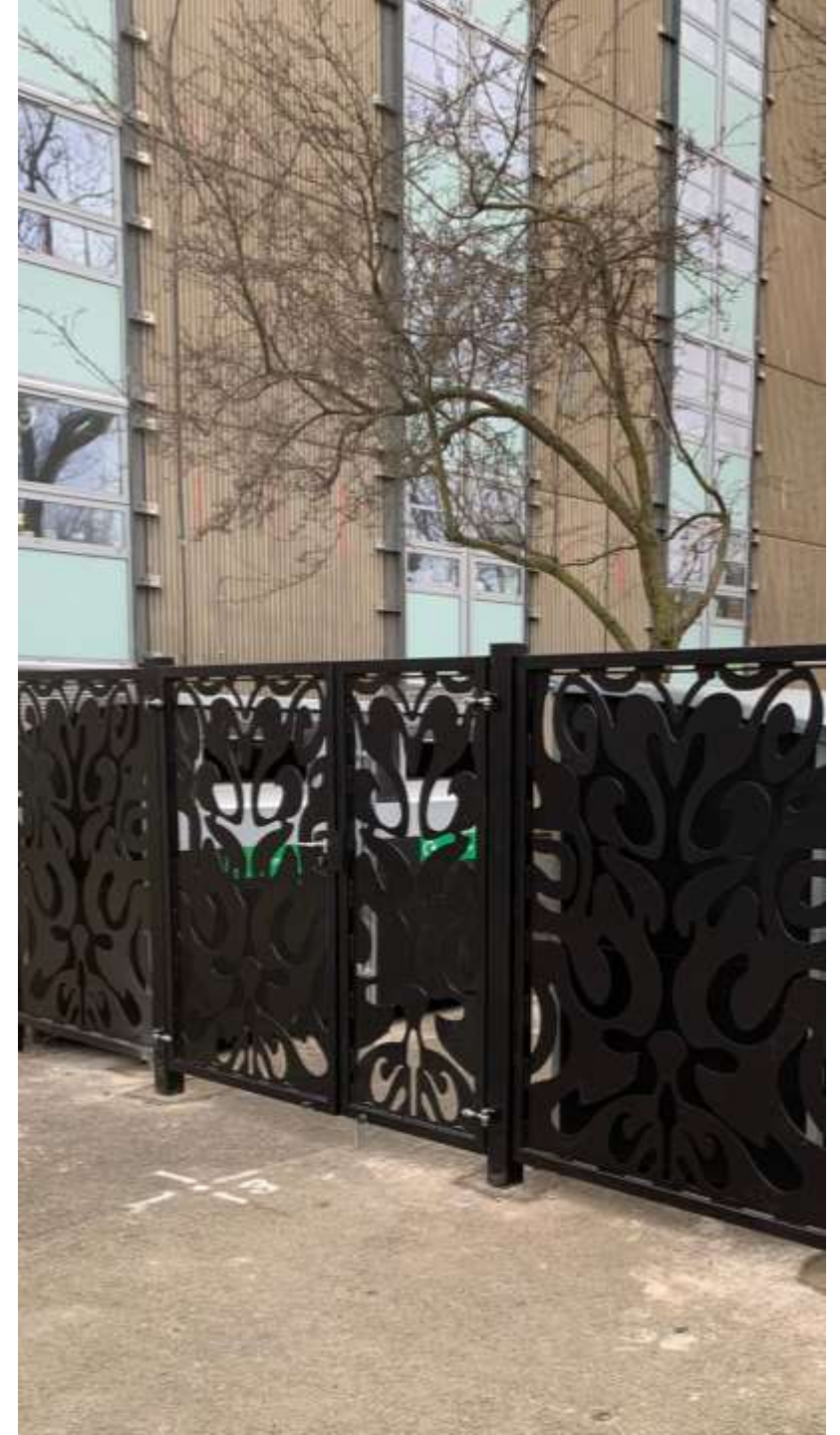
- CFPA-E guidance
- Secure bins at least 6m from dwelling
- Or within 30min FR structure



Visibility

Ensure good surveillance but screen from road

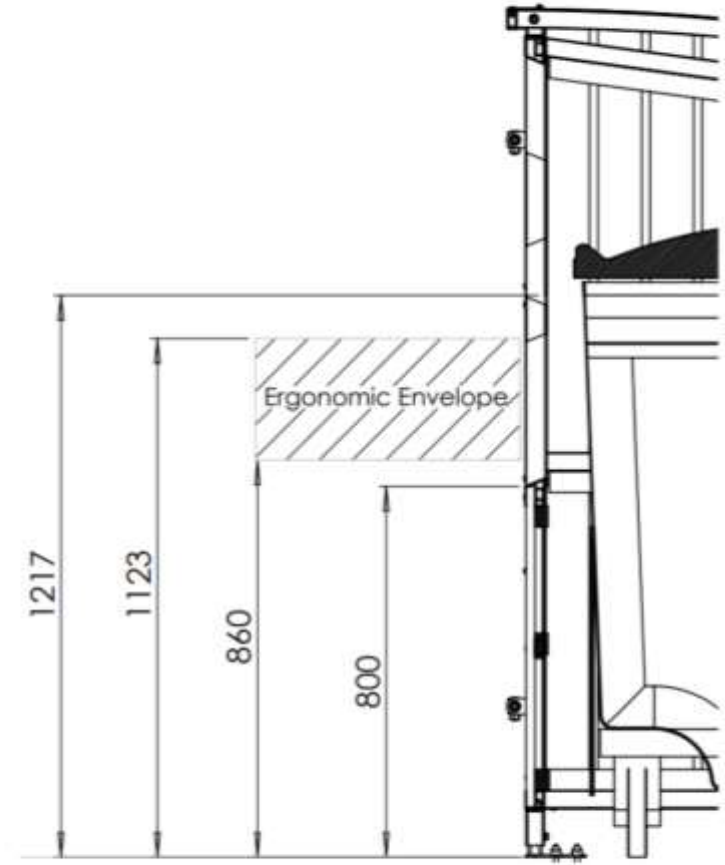
- Locate in view of residents
- Avoid hidden areas
- Face away from street
- Provide additional screen planting



Ease of use

Make them easy for *everyone* to use

- Remove obstacles
- Hands-free use
- Wheelchair-accessible



Communicate

Clearly signpost what can be placed in each bin

- Define what can/cannot be placed in bin
- Define who is permitted to use it
- Tell them where they can take excluded items
- Penalties for non-compliance



Segregate

Right stuff, right bin

- Exclude refuse bags using apertures
- Tailor for at-source segregation or mixed
- Eliminate space for bulk or provide



Secure

Exclude unauthorised users with controlled access

- Secure area if possible
- Include/exclude nearby houses
- Specific access for commercial users?
- Key/fob/app-controlled access



Beautify

Enhance, maintain, clean

- Create Neighbourhood Assets
- Place to meet and greet
- Add greenroof/planters for biodiversity
- Clean regularly



Enforce

Monitor correct usage and prosecute if necessary

- Investigate any sidewaste, recharge
- Redeployable CCTV if necessary
- Self-funding enforcement service



There is a viable alternative to refuse chutes and
internal bin rooms

BUT

FOLLOW THE STEPS!

THANK YOU

metro**STOR**[®]